

# WestsideSeattle

Your neighborhood weekly serving Ballard, Burien/Highline, SeaTac, Des Moines, Normandy Park, West Seattle and White Center

**WELCOME  
BACK  
EVERGREEN  
HIGH!** SEE » P. 9



Kimberly Robinson



**BERKSHIRE  
HATHAWAY**  
HomeServices

Northwest  
Real Estate

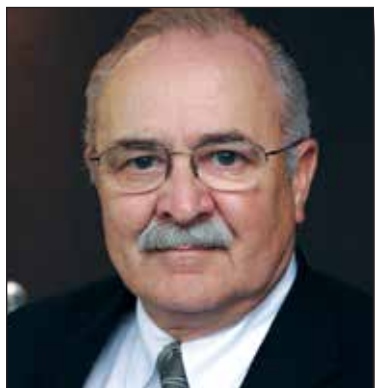
See our  
listings on  
page 14

4700 42nd S.W. • 206-932-4500 • BHHSNWRealEstate.com

© 2017 HSF Affiliates LLC.



# Stormy weather



## KEN ROBINSON

The crazy (and dangerous) weather around the nation and the world does make us believe something karmic is going on.

We have several friends in Florida living on the east coast near Boca Raton, the southernmost city in Palm Beach County. They have emailed us in the last couple of days to say they are battening down the house with plywood from the last storm a decade ago but are okay so far.

These same friends grew up here, in Normandy Park. They have a beautiful home on the Intracoastal Waterway, a 3,000 mile long waterway that runs from Boston to the top of Florida. Some sections of the waterway consist of natural inlets, saltwater rivers, bays, and sounds, while others are artificial canals. It provides a navigable route along its length without many of the hazards of travel on the open sea.

On Sunday, the storm which earlier was headed west began turning north east and seemed to be cruising right up along the coast. By the time you read this column, major damage will have occurred.

We keep our friends in our thoughts for a safe passage.

The story last week about the devastation in Houston, written by our own Lindsay Peyton, underscored the depth of the devastation.

In her words: "Maybe you think Houston is just some city 2,000 miles away. Maybe you think that the only way this story applies to you is as an appeal to your pocketbook, an appeal to your heart to have some sympathy.

But really this story should serve as a parable, a forewarning even.

How are we as a nation preparing for the long-term effects of global warming? Are we truly considering the environmental impact of constant development, ever-expanding pavement?

Are we building safely and investing in needed safeguards for industry? Or are we just doing the minimum? Being reactive instead of proactive?

Houston is not the only city in the U.S. placed perilously close to the ocean. Look at those maps displaying the cities and regions that will be under water in the next decade. Where will all those people go? And will you—or the people you love—be among them?

## ON THE COVER

Highline Schools Director Ty Curry welcomed students to the reunified Evergreen campus Wed., Sept. 6.

## WS CONTRIBUTORS



### LINDSAY PEYTON

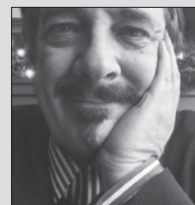
News Editor

Lindsay is a veteran journalist who came to us from the Houston Chronicle where she covered education and arts beats. She lives in West Seattle. She is a nice person and brings a Texas attitude to her work.

### PATRICK ROBINSON

Director of New Media

Patrick grew up in the publishing business and has helped develop our websites. He is a journalist, prize-winning photographer and West Seattle resident. And he is one of the brothers.



### TIM CLINTON

Sports Editor

Tim Clinton has been to more baseball, football, track, golf, tennis, swimming and basketball games than all the players he has reported on in his 35 years as Sports Editor. Tim knows sports.

### GWEN DAVIS

Reporter/Photographer

Gwen Davis likes reporting on local government. She is a veteran reporter and photographer. She is tough, accurate and fair.



### JEAN GODDEN

Columnist

Jean Godden is a veteran Seattle PI and Seattle Times newspaperwoman and city councilwoman. Her column will give us an insider's view of city politics.

# WS

## WestsideSeattle

Ballard News-Tribune, Highline Times, West Seattle Herald, Des Moines News, SeaTac News, White Center News

Jerry Robinson	Publisher Emeritus – 1951 - 2014
T. C. Robinson	Co-Publisher/ General Manager timr@robinsonnews.com
Kenneth Robinson	Co-Publisher/ Managing Editor 425.238.4616 kenr@robinsonnews.com
Lindsay Peyton	News Editor lindsay@robinsonnews.com
Patrick Robinson	Director of New Media pr@robinsonnews.com
Tim Clinton	Sports Editor timc@robinsonnews.com
Gwen Davis	Reporter/Photographer kenr@robinsonnews.com
Amanda Knox	Contributing Writer/Photographer amandak@robinsonnews.com
Scott Anthony	Columnist kenr@robinsonnews.com
Peggy Sturdivant	Columnist kenr@robinsonnews.com
Jean Godden	Columnist jgodden@blarg.net
Dave Kellogg	Circulation Manager 206.370.1475 circulation@robinsonnews.com
Dalinda Lee	Legals Coordinator 206.376.5952 legals@robinsonnews.com
Dona Ozier	Sales Director 206.387.3873 dona@robinsonnews.com
Dick Sherman	Advertising Sales 206.356.7288 richards@robinsonnews.com
Niche Network	Production melissa@robinsonnews.com
Calendar	calendar@robinsonnews.com
Obituaries	obits@robinsonnews.com 206.718.9016

5158 S. 170th St. • Seattle, WA 98188

www.westsideseattle.com

Email: kenr@robinsonnews.com

Editorial: 425.238.4616 • Classified Ads: 206.718.9016  
Circulation: 206.370.1475 • circulation@robinsonnews.com  
COPYRIGHT © 2017 ROBINSON NEWSPAPERS, INC.

Westside Seattle (USPS 000-890)  
is published weekly every Friday for local  
delivery by Robinson Newspapers at  
5158 S. 170th St.  
Seattle, WA 98188

Periodicals Postage Paid at  
Seattle, WA

### POSTMASTER:

Send address changes to:  
Westside Seattle/Robinson Newspapers  
P. O. Box 66769, Seattle, WA 98166

**EASY STREET RECORDS**  
WE CAN BUY YOUR USED RECORDS, CD'S AND DVD'S  
**CONGRATS HALL OF FAME HOME TOWN BOYS PEARL JAM**  
COME CHECK OUT POP UP SHOP  
LIVE SHOWS  
OUR CAFE SERVES UP BREAKFAST 7AM-3PM DAILY

@easystrecords  
@easystreetrecords  
/easystreetrecords  
easystreetonline.com

4559 California Ave. S.W.  
206.938.EASY

**SEPT. EVENTS**

Annual Seahawk Tailgate Party - Sept. 14  
Northwest Trek Wildlife Park - Sept. 20  
Coming in October:  
Healthy Heart Tips - Oct. 12  
See our website for event details!

**A winning game plan based on teamwork.**

Join us as we kick off a new season of exciting  
**Fun and games**

We are locally and family owned, and after more than 25 years serving our senior community, we know what it takes to provide residents the right combination of services, amenities and living options you want and deserve. Each and every member of our team looks forward to making a difference in your day, every day. At Daystar, we go the extra step, make the extra effort that transforms our senior lifestyle community into a home. We take care of the chores of everyday life so you can spend your time as you wish with friends and family. With both independent and assisted living options available, we're sure we can develop a game plan for your own winning senior lifestyle. Call us today!

**DAYSTAR RETIREMENT VILLAGE**  
*It's so Good to be Home!*

2615 SW Barton St., Seattle, WA 98126  
**206.937.6122**  
**www.DaystarSeattle.com**

**MAKE THE SMART MOVE!**  
Limited number of apartments now available! Reserve yours today!





Patrick Robinson

Assistant Principal Sarah Grant was in a welcoming mood just like the cheer staff, alumnae and teachers who were on hand at Evergreen High School on the first day of the school year to celebrate the school's reunification after a ten year experiment as three campuses. The nearly 1,000 strong student body later gathered in the gym for a welcome assembly.

## Evergreen High School celebrates reunification with a grand rally

Patrick Robinson

Evergreen High School with a student body of nearly 1,000 held a celebration and welcoming ceremony on the first day of school Sept. 6 for a very special reason. For the first time in a decade the school was one unified campus. The school had been divided 2007 in an experiment funded by the Bill and Melinda Gates Foundation to increase student achievement levels. The three small schools were named: Technology, Engineering & Communications School (TEC), Health Sciences & Human Services High School (HS3), and Arts & Academics Academy (AAA).

But the experiment proved to have mixed results and the decision was made to reunify the school this year.

The rally began at 6:45 a.m. as teachers, administrators, alumnae, parents and the cheer staff formed a friendly gauntlet to greet students as they arrived. Some kids were a little surprised and ducked into other entrances but most were amazed and amused by the posters and smiling faces.

While the students will be the most likely beneficiaries of the change, the gathered alumnae, community supporters and administrators were clearly the ones happiest about the renewed status.

Aaron Garcia, an alumni and former Guidance Counselor at Evergreen, now with the White Center Community Development Association as White Center Promise Manager said, "I think this was a very community centered effort. Evergreen's always been a hub. The original change was to improve academic trends but it was hit or miss. I will admit there were some areas where I definitely saw some improvement, but something that was missing was the community environment where people felt connected to the school. So, I'm excited we're moving back to a comprehensive school."

Long Phan, an Evergreen graduate who went on to Harvard, is the son of refugees and the first member of his family to go to college. He was behind a fund raising effort to buy sweatshirts for as many people as he could. He raised \$18 thousand dollars and the shirts were evident as the students gathered in the gym for a welcoming assembly.

Phan said, "This has brought the community together and we are so excited. Evergreen has always had a really strong family feel. We are one big family and we are here to support the community we know and love. It's overwhelming personally just

to see the community out supporting our students and staff. I think when we are all focused on each other's success it will result in better academic outcomes and better sports performance."

Principal Jacqueline Downey said, "We realized that the structure of the school was limiting to students in terms of activities outside of school and also in terms of course variables they could take, so by

coming back as one high school it allows us to still have small learning communities so that teachers are sharing students. But we now have broader opportunities for students to take more courses and engage in activities outside the school. I'm thrilled to be able to help create that one school. Creating one family on behalf of our students and community is an honor

**EVERGREEN IS BACK! » PG.6**



**Find the perfect home.**  
**Visit [BHHSNWRealestate.com](http://BHHSNWRealestate.com)**





**BERKSHIRE HATHAWAY**  
HomeServices

**Northwest Real Estate**

**4700 42nd S.W.**  
**206-932-4500**  
**[BHHSNWRealestate.com](http://BHHSNWRealestate.com)**

© 2016 HSF Affiliates LLC.



# HIGHLINETIMES

DES MOINES &amp; SEA TAC NEWS SINCE 1945

## Burien Town Square vision now complete —a project decades in the making

By Lindsay Peyton

There wasn't any pomp and circumstance or big parade planned to celebrate the completion of Burien's Town Square.

The very last step of two-decade long urban planning project was completed on Saturday, Sept. 2 without any fanfare.

The event most likely went unnoticed by residents, except for the youngest ones—as the reopening of the Town Square Spray Park gave kids plenty of opportunity to play in the water for Labor Day weekend.

For city officials the opening of the splash pad was more significant than just making needed plumbing system repairs.

It signaled a major milestone for the city.

There are only a few city employees who can trace the whole history of the Town Square project—a visionary plan that remained, even as leadership in the city changed.

David Johanson, Burien's senior planner, started working with the city as an intern, just after it was incorporated in 1993.

"It was kind of the wild west then," he said.

He remembers the very beginning of Town Square—and how its roots were formed when the state required newly formed Burien to create a comprehensive plan, a look 20 years into its future.

One main issue became immediately evident.

"We needed a Town Square to be the focal point of the community, because there really

wasn't one," Johanson said. "There wasn't one central place."

Burien hired HyettPalma, a consulting firm specializing in enhancing downtowns and commercial districts, to create a strategic study.

"That was the genesis for a lot of things," Johanson said. "It set the wheels in motion for our downtown."

By 1999, Burien also completed a streetscape design plan. One of the main issues was that traffic needed to slow down in the town's main hub.

Burien residents also wanted a gathering place, one that included commercial space and parks.

In 2000, Johanson said Burien completed its "Town Square Study."

"That really took it to the next level," he said. "You start in one direction and you have to be flexible, because you may end up somewhere else."

There were a number of design options developed for the plan.

"Which one was selected? None of these," Johanson said.

In 2002, Burien began working on its master plan, which included more outreach for the community.

"We looked at all these different concepts and then came back with more options," Johanson said.

Burien received the Puget Sound Regional Council's "Vision 2020" Award in 2001 for



Lindsay Peyton

Burien Town Square farmers market—A weekly farmer's market in Burien's Town Square has become a popular event for the city.

the design work.

"It was a big deal, recognizing all of the work on the planning side," Johanson said.

While the city had honed in on its vision for the Town Square, it still had not acquired the property to make the dream a reality.

The next four to five years were spent making integral real estate deals.

"You had all these hurdles to jump over to make this happen," Johanson said. "You had to overcome all of the financial issues and purchase the land."

In addition, King County Library System got involved.

"Then we had a real partner to buy land," Johanson said. "Things were falling into place."

In 2009, the new Burien Library opened as an anchor to the Town Square—and a new home for the City Hall.

Burien had joined with developers Urban Partners in 2004, and work began on the new

street grid.

By 2007, the company started building condos with retail space on the ground floor.

Everything was moving along.

"Then the recession hit," Johanson said.

For a while, all of the momentum came grinding to a halt.

"Then things started to come back—but there were different people in the city and different people in the development firm," Johanson said. "The city decided to go in a different direction."

In 2013, Burien joined with Legacy Partners, a different development company to finish the project.

Legacy partnered with Pillar Properties to build "the Maverick"—a multi-family complex in the Town Square in 2015. The apartments are now 75 percent rented.

Senior living facility Merrill Gardens was added to the plan around the same time—and opened its doors about two months ago.

Johanson said the only thing that remains is to rent retail spaces in the Town Square. All of the construction is complete.

"That's the biggest message—if you can get momentum and buy-in, stick with it," he said. "Stay the course. It took 20 years. Big things don't happen overnight."

Now Johanson hopes the Town Square will spark further economic development in Burien.

"There's a lot of opportunity," he said. "What this project shows is there's a market for it and it can be done."

Burien's economic development manager Andrea Snyder said that the Town Square project was part of the reason she accepted her post.

"One of the things that impressed me about Burien was that they had this vision so long ago and stuck to it, even through different city councils and leadership," she said.

Snyder believes the project will serve as a catalyst for other development around downtown Burien.

"We've already seen more interest," she said. "They see this as a place where their businesses could be successful. The increased density in the downtown also supports existing businesses. They're already noticing more foot traffic."

Snyder said the multi-use Town Square development ultimately contributes to a higher quality of life in Burien. She said events in the space like the weekly farmer's market attract new residents to the area.

"There are all these resources right here, and that's what really builds a community," she said.

Johanson said the city will continue to look for ways to accommodate growth, add housing and expand commercial spaces.

"We're hoping to keep the momentum going," he said. "Now hopefully, we'll have similar projects."

**BURIEN Farmers Market**

*• natural product •*

*always fresh, always best*

... BURIEN, WASHINGTON ...

**FARMERS MARKET**

*EAT LOCAL & FRESH*

**Fresh Vegetables**

**Crafts**

**Flowers**

**Food**

**Baked Goods**

*"Fruit Is Fast Food"*

**Every Thursday thru Oct. 26<sup>th</sup> 11AM - 6PM**

**Burien Town Square**  
S.W. 152<sup>nd</sup> & 5<sup>th</sup> Place S.W.

**DiscoverBurien.org**  
**206.433.2882**

*Pacific Galleries*  
SINCE 1972

**Visit Seattle's Largest Antique Mall!**

Explore over 200 dealers offering everything from 19th century antiques to mid-century vintage items.

*Antique Mall and Auction House*

241 South Lander St., Seattle • 206.292.3999 • [www.PacGal.com](http://www.PacGal.com)

*10% off first time visits through September*

**Graceful Tempest Massage**

Emily Laguzza

206.765.7018 • 3400 Harbor Ave. S.W.



# BALLARDNEWS-TRIBUNE

SERVING BALLARD SINCE 1891

## Ballard's Gilmore Studio offers actors insight into the craft

By Lindsay Peyton

Gilmore Studio is located in a basement labyrinth in the Ballard Underground, 2220 N.W. Market St.

Go down the stairwell, follow a few twists and turns, and a door opens to a makeshift stage, a well-lit circle surrounded by a few rows of chairs.

In the corner of the top row, the maestro's desk is perched.

It's a spot Gregg Gilmore finds most comfortable these days.

The actor has discovered that his greatest joy is now in the classroom—passing on his passion and teaching technique to students.

Finding the acting studio is the first test, Gilmore jokes.

But in all seriousness, gaining a spot in one of his classes is no easy feat.

Enrollment is by invitation only—and based on an interview with Gilmore.

He doesn't care if the student has acting experience.

"It's their spirit and how hungry they are," Gilmore said. "I can just feel it if they're serious."

He knows what it's like to want to act more than anything.

Gilmore was bitten by a love of performing at a young age. When he was 5 years old and visiting Disneyland, his parents bought him a magic set.

"I got way into it," he said.

Gilmore later traded his magic tricks for the art of the stage—moving to New York to study under Sanford Meisner, Robert X. Modica and William Alderson.

He eventually realized that teaching was his favorite part—better than being on stage or in front of a movie camera.

"I wanted to teach, because teachers had the biggest impact on my life," he said. "Helping people is so huge. Really seeing them change is so rewarding."

Gilmore's classes have a waiting list. He likes to keep his acting school small—about 15 or 20 students at a time.

His focus is the craft of acting—and classes are challenging as a rule. "Not everybody gets a trophy," he said. "It's a super tough business."

Seattle actor Ben Buehler said Gilmore's classes have made all the difference for his career.

Buehler had already studied acting, starred in a few films and lived in L.A. before he discovered Gilmore Studio.

He has spent the past three years studying with Gilmore and honing his skills.

"The whole process is about self discovery and breaking through the walls we put up, the way society teaches us to act," Buehler said. "It's really pushed me to become more confident as a person and as an actor."

But the classes aren't for everyone, Bue-



Lindsay Peyton

Gregg Gilmore has hit his stride—passing on his passion for acting to students. He runs Gilmore Studio, located in a basement labyrinth in the Ballard Underground, 2220 N.W. Market St.

hler warned.

"It's either exciting to you or it's too much," he said. "It's an emotional ride."

The trip has been worthwhile for Buehler. "I attribute Gregg's classes directly to my success as an actor," he said. "It's been

tremendous. Gregg is a phenomenal teacher. He's so passionate about teaching—and that's what motivates you to do the work."

For more information, visit [www.gilmore-studio.org](http://www.gilmore-studio.org).

## Ghost Light Theatricals keeps the light on for local theatre in Ballard

By Lindsay Peyton

When the curtain closes—and everyone goes home for the night, theatres keep a guiding light turned on.

Known as the "ghost light," this little pulse of electricity keeps the theatre from ever being completely dark.

The practice served as the inspiration for Beth Raas-Bergquist when she co-founded Ghost Light Theatricals, a non-profit company operating in the Ballard Underground.

Turning on the ghost light was one of Raas-Bergquist's tasks in her first theatre job.

"It's a romantic notion," she said. "I always liked the idea of the ghost light being a beacon that keeps the idea of theatre alive."

Since being established in 2003, the company has expanded, added members and honed its mission to create imaginative stories inspired by classical texts—that resonate with the modern world.

Now Raas-Bergquist is preparing to step down from her role as artistic director of the theatre company.

"We're looking at what succession will look like," she said. "It's both scary and exciting as a small company to figure out how to change and what direction to take

GHOST LIGHT » PG.8



**C. DON FILER AGENCY, INC.**  
INSURANCE BROKERS  
Established 1947

**Representing**



**and other fine companies**

**Call us for a  
FREE QUOTE!**

**206-783-1818**  
5451 Ballard Avenue NW  
[www.filerinsurance.com](http://www.filerinsurance.com)



Kenzy Stuart  
Agent



**LFS MARINE SUPPLIES**

**Your neighborhood source  
for performance outdoor  
clothing and supplies.**

*Bargain prices on brands you trust!*  
VICTORINOX, XTRATUF, RED LEDGE,  
GRUNDENS, CARHARTT,  
GEORGIA BOOTS, ATLAS, 3M SAFETY  
AND SCOTCH-BRITE SUPPLIES

**We've got you covered  
from head to toe!**





VICTORINOX  
SWISS ARMY



carhartt



RefrigiWear

[www.lfsinc.com](http://www.lfsinc.com)  
**206-789-8110 • 908 NW BALLARD WAY**

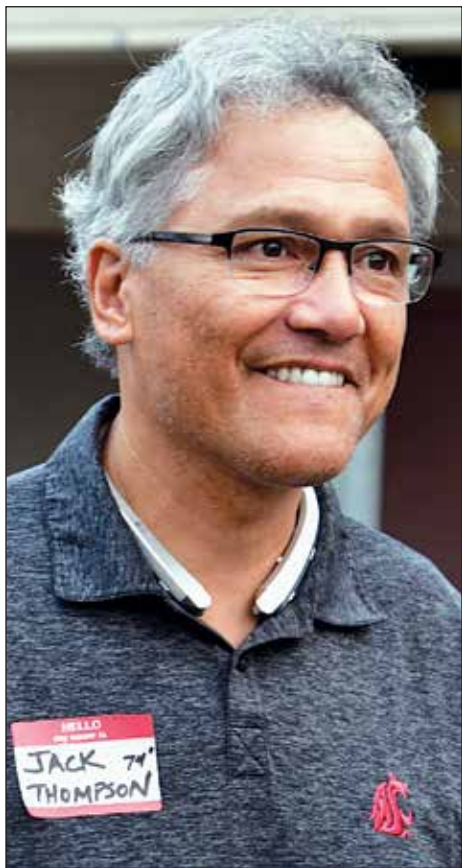


**For 75 Years,  
Everything has  
Run Better with  
Bardahl**

**1.888.227.3245  
[www.bardahl.com](http://www.bardahl.com)**

No one  
succeeds in  
business alone.  
To our **partners,**  
**employees,** and  
most importantly to  
our **customers,**  
**thank you** for your  
trust and support.  
**Here's to another  
75 years!**





Patrick Robinson

Jack Thompson who was a well known quarterback for Evergreen and later WSU and in the NFL was back to support the students and the reunification of the school.

It's a great place to meet!

FINE COCKTAILS

**WEST 5**

TASTY FOOD

4539 CALIFORNIA AVE. SW WE5-1966

**out & about**

BURIEN

**BURIEN Farmers Market**

Fresh Vegetables  
Crafts • Flowers  
Food • Baked Goods

Every Thursday  
thru Oct. 26<sup>th</sup>  
**11AM - 6PM**  
Burien Town Square  
S.W. 152<sup>nd</sup> & 5<sup>th</sup> Place S.W.

To advertise your event in

**out & about**

Call Dona at 206.387.3873  
dona@robinsonnews.com



Patrick Robinson

The whole school was in the gym for the welcome assembly.



Kimberly Robinson

The Evergreen High School Cheerleaders were excited to be there to welcome the students.



The old sign in The White Center News in 1964.



Patrick Robinson

The Class of 1966 presented a check for \$15,000 for a new readerboard for the school.

EVERGREEN CONTINUED FROM PAGE 3

and really they've been asking for it. The turn out today shows the broad support we have and how people feel connected to this school."

Athletic Director for Evergreen Emily Zimmerman said she believes the new togetherness will improve athletic participation and performance. "Our numbers are already up for soccer and volleyball this year and our football numbers are up this year too." The first game, a cross league contest vs. West Seattle resulted in

a 68-0 loss, stopped in the third quarter but Evergreen was clearly undermanned. "We've got a lot of ineligible players so that's something our coach is working on. We are working on eliminating barriers for kids who have trouble getting to practice and more. The school is doing a really good job to make sure they get there. The team will grow, we should have ten more on the sidelines" for future games she said.

The Class of 1966 gathered \$15,000 for a new electronic readerboard. They got together at their 50th reunion and made it happen. Mike Turner, Rick Canady, Ken



Kimberly Robinson

The school mascot, the Wolverine seemed excited about the reunification, too.

Ruud, and Allen Sample were all there to help present the check.

One of the most famous alums, former quarterback Jack Thompson (1974) was on hand to welcome the students and said, "When they split it up into three schools that was a real head scratcher for me... I'm just glad it's reunified. I think the community has rallied around it. I think the Highline School District thought that it was an experiment that was best in the rear view mirror and I'm glad. Now these kids will grow up in a tradition similar to what we grew up in and I think that's a good thing."



# POLICEREPORTS

## WEST SEATTLE

### FIGHT ENDS WITH A HIT AND RUN

Officers found the victim of a hit and run sprawled on the ground on the 10600 block of Marine View Dr. S.W. around 4:20 p.m. on Sun., Sept. 3. He was alert and articulate and explained that he had been working in his garage and unloading his truck, when he became aware that someone had obstructed his driveway with a White Lexus SUV. His wife was upset by the car and went next door to the neighbors' house to try to locate the owner of the vehicle. The neighbors were hosting a garage sale and the owner of the Lexus was there shopping. A verbal altercation ensued between the woman and the neighbors who were upset about having their driveway blocked. The language became harsh. The homeowners went to the Lexus and held down the horn for a long time until the owner returned to her vehicle. The woman continued to argue with the man. He wrote down her license plate number and she got into the car and backed up abruptly, striking the man with enough force to knock him several feet back into his own yard. The suspect was identified as a resident of 45th Avenue S.W. Officers met with the woman and she said that she had been cordial during the interaction. She said the man's wife was aggressive and rude to her. She thought that the man faked being hit by the car. She was arrested, charged with a hit and run and transported to King County Jail.

### MAN ROBBED AFTER CAR ACCIDENT

Around 9:50 p.m. on Sat., Sept. 2, officers responded to a report of a collision between a bicycle and a vehicle near the intersection of Delridge Way S.W. and S.W. Brandon Street. Multiple callers had also reported a fight at the same location. Officers arrived on the scene and found the driver of the vehicle on the ground in pain and the bicyclist sitting inside a bus shelter being treated by the Seattle Fire Department. The officers learned that after the collision, two men ran up to the driver of the vehicle and began yelling at him. One of the men punched the driver and then grabbed him, pulling him out of the vehicle. They punched and kicked him in the face and head and rifled through his pockets. A woman intervened asking the suspects to stop. One of the witnesses on the scene had the man's cell phone and was arrested for investigation of robbery. Officers believe the bicyclist was responsible for the accident.

### VICTIM OF ASSAULT FOUND IN WESTWOOD VILLAGE PARKING LOT

Officers were dispatched to 2800 block S.W. Barton Street around 12:20 p.m. on Fri., Sept. 1 after hearing a report that an injured person was in the Westwood Village parking lot. When the police arrived, Seattle Fire Department was already on the scene, providing medical care for the victim, who had an injury to the bridge of his nose. Officers had difficulty interviewing the man due to the blood trickling out of his nose into his mouth while he talked—and also to a half empty vodka bottle he had with him. The man said he had an argument with three 25-year-old men near a bus stop by the QFC. He said he came to the rescue of a 30-year-old woman who was being approached by the men. The victim said that they hit him with an object, and he fell to the ground from the impact. Officers were unable to locate the suspects or the woman. The victim was transported to a medical facility. Officers found that he has been the victim of a number of assaults—and that twice he came to the rescue of a female acquaintance, resulting in a conflict with a group of men.

## HIGHLINE

### BASEBALL FIELD ASSAULT

A man was assaulted by three unknown men at a school baseball field on the 1300 block of S.W. 114th Street. They used their hands, feet and a gun to attack him. The crime was reported around 2:30 a.m. on Sat., Sept. 2.

### BURGLARY AT DOTTIE HARPER PARK

Officers received notice that Dottie Harper Park, 421 S.W. 146th St., was burglarized around 8 a.m. on Wed., Aug. 30. An employee at the park said the suspect broke into the Dottie Harper house and garage overnight by kicking in the garage door, prying open wood shutters and kicking in glass windows.

### FATHER ASSAULTS SON WITH HAMMER

A man called police before midnight on Tues., Aug. 29 to say that his father had struck him in the head with a hammer. The victim of the assault resides on the 1000 block of S.W. 156th Street.

### ROBBED AT GUNPOINT

A man was robbed at gunpoint near the intersection of S.W. 130th and Ambaum Blvd. around 5 p.m. on Sun., Aug. 27. He said a man took a revolver out and ripped off his gold necklace.

## BALLARD

### THIEVING YARD SALE SHOPPERS INVOLVED IN HIT AND RUN

Around 1:30 p.m. on Sun., Sept. 3, officers were dispatched to the 8500 block of Mary Avenue N.W. to investigate a robbery. First they checked the area for the suspect's vehicle. Then, they spoke to the victim, who explained that he was having a yard sale, since he is moving soon. He had a number of tables with clothes, toys and items on display. A group of three people—one man and two women—arrived in a pickup truck. One of the women requested that the victim show her some items—diverting his attention from the other two individuals. She expressed interest in one item, saying she would come back to purchase it. All three left—and the homeowner returned to his lawn. He realized several items were missing and immediately realized he had been conned. He searched the area for the suspects. He could not find them, so he returned to his yard. Then the suspects came back, and the man tried to yell out at them. The pickup accelerated, striking the man in the chest with the driver side mirror. He fell to the ground and scraped both elbows. The pickup continued south on Mary Avenue N.W. and then turned east on 85th. The man driving the truck had dropped his wallet, including the driver's license inside, as well as multiple baggies that officers suspected of having drug residue and crumpled aluminum foil. He told officers that the photo in the license matched the suspect. Officers placed the wallet into evidence. The victim said the stolen items included a cell phone and case, antique toys and about 35 t-shirts.

### HOMELESS WOMAN ATTACKS MAN

When officers arrived to investigate an assault on the intersection of 24th Avenue N.W. and N.W. Market Street around 11:50 a.m. on Sun., Sept. 3, the Seattle Fire Department was already on the scene, wrapping up the victim's forehead with gauze. The man had a two-inch laceration on his head but refused to go to the hospital. He said he was on the dock in the morning, when a homeless woman approached. He asked if she wanted a drink, and she said yes. They shared some vodka, and she asked if he had a speaker so she could listen to some music from her cell phone. He said yes. She tried to connect with the Bluetooth using her phone but was unsuccessful and became increasingly frustrated. He told her they could just listen to the music on her phone. This angered her, and she threw the speaker, hitting him in the arm. She then picked it up again, this time throwing it at his head, cutting him in the forehead. He stood up, and she tried to shove him. He shoved her back, knocking her to the ground. He was bleeding profusely from the forehead and told her that he was going to call the police. She threatened to kill him as he walked away in search of a phone to call 911. The victim is homeless and has no mailing address or phone. He believes the suspect hangs around the area of 22nd N.W. and N.W. 57th Street. Officers checked the area but were unable to locate her.

# FISHERMEN'S FALL FESTIVAL

Saturday

September 23, 2017

FREE 11:00 AM - 6:00 PM

Seattle Fishermen's Terminal

1900 W. Nickerson Street

FREE SHIP CANAL TOURS • WILD SALMON BBQ  
SURVIVAL SUIT RACES • SALMON FILLET CHALLENGE  
LIVE MUSIC & PERFORMANCES • FREE KIDS' ACTIVITIES  
ALASKA SCALLOP, CRAB AND COD SEAFOOD BOOTHS  
BEER, WINE & COCKTAIL GARDEN



All proceeds benefit  
SEATTLE FISHERMEN'S MEMORIAL

WWW.FISHERMENSFALLFESTIVAL.ORG

facebook.com/FishermensFallFestival

Instagram: @FishermensFallFestival

#FishFallFest

Thanks to our media sponsor: KOMO 4





Dave Hastings

Ghost Light Theatricals is a non-profit company operating in the Ballard Underground. In 2016, the company produced “From Kings to Controllers” by Stacy Flood and directed by Jennifer Crooks. Ghost Light focuses on creating imaginative stories inspired by classical texts—that resonate with the modern world.

## GHOST LIGHT CONTINUED FROM PAGE 5

when the founder steps down.”

But before that happens, Raas-Bergquist is preparing for a banner final season

at Ghost Light Theatricals.

“It’s a big year for us,” she said. “We’re already rehearsing for our first show.”

Besides the season’s plays, Ghost Light Theatricals hosts the “Battle of the Bards”

fundraiser each year. The event pits three productions against each other and the audience decides the winner. The play with the most votes returns in the following season’s line-up.

The company is seeking submissions now for the next battle, which is held in February.

Ghost Light also hosts Happy Hour productions on off nights and after main shows.

Online donations help keep the theatre afloat, Raas-Bergquist said.

“We’re still the only live theatre in Ballard,” she said. “Space to make theatre and dance is really needed in Seattle. It’s vital and exciting and important for companies like us to brighten up this underground space and make local art possible.”

Ghost Light’s managing director Rob Bergquist added that the company makes theatre accessible at an affordable price.

“Where we make an impact is by doing modern interpretations of classic theatre,” he said. “And we do it at a pretty

low price point.”

Tickets are usually \$18 or \$15 for students and seniors.

As a rental venue, the company provides space for sketch comedy, improv and burlesque.

“We’re really focused on racial equity, diversity and empowering groups that are traditionally marginalized,” Bergquist said.

Creating and maintaining theatre space is an important task, he added.

“One of the things that our productions have in common is they’re fun and thoughtful,” he said. “We create things on a small budget that look like they’re on a big budget. And that play will transport people to a different world.”

Ghost Light also has its own in-house bar. “It’s a fun, social evening,” Bergquist said. “And on top of that you’re able to see a piece of work that you could probably only find in the Ballard Underground.”

For more information, visit [www.ghostlighttheatricals.org](http://www.ghostlighttheatricals.org).

# Spiritual Resources

Catholic

## Our Lady of Guadalupe Church

### Mass Schedule

Wed, Thurs, Fri..... 9:00 a.m.  
Saturday Vigil..... 5:30 p.m.  
Sunday Mass...8:30 a.m., 11:00 a.m.

Fr. Jack Walmesley, Pastor

7000 35th Ave. SW • 206-935-0358  
[www.olgseattle.org](http://www.olgseattle.org)

Catholic

## Holy Family Parish

Fr. Horacio Yanez, Pastor  
9622 20th Ave SW, White Center  
206-767-6220



Daily (M-F)	8:30 a.m. (Eng)
Wed	7:00 p.m. (Esp)
Sat Mass	8:00 a.m. (Eng)
Sat Vigil	5:00 p.m. (Eng)
	6:30 p.m. (Esp)
Sun Mass	8:00 a.m. (Eng)
	9:30 a.m. (Esp)
	11:00 a.m. (Eng)
	12:30 p.m. (Esp)
	6:00 p.m. (Tagalog)

[www.hfseattle.org/parish](http://www.hfseattle.org/parish)

Centers for Spiritual Living



### SUNDAY MORNING

9:30 am Meditation  
10:00 am Celebration Service

### WEDNESDAY NIGHT

7:00 pm Service

[www.genesis-global.org](http://www.genesis-global.org) • 206-941-3614  
An Inclusive Community  
of Unconditional Love

To advertise  
your spiritual  
center, call  
Dick Sherman  
at 206.356.7288

## SEATTLE'S HEATING & AC EXPERTS Since 1975





# Penchant for prejudice



## MARJORIE YOUNG The Psychic View

The topic of 'prejudice' has been all over the news of late. The lovely city of Charlottesville, Virginia moved front and center when torch-bearing Nazis, Klansmen, and white supremacists marched through town bellowing Anti-Semitic slogans and hatred towards anyone of color. That this was occurring in twenty-first century America rather than 1930s Berlin made the scene all the more incomprehensible. But while our nation was founded on the ideal of liberty for all, it also permitted slavery and genocide of Native Americans. Clearly, oppression has always been a part of our national fabric.

Bigotry is something I find bewildering. Certainly, we may dislike our obnoxious neighbor, a toxic family member, or a creepy

co-worker and we're hardly obliged to admire everyone equally. But a blanket vilification of an entire ethnic group, religion, or nationality is beyond senseless. Perhaps it springs from innate sense of inferiority. There's an old adage that 'some people can only feel taller by cutting off the heads of others.' The act of putting down another group means we can view ourselves as 'superior.' This is not a sign of a happy human being.

Another handy use for prejudice is that 'the other' (fill in your own blank) is responsible for all your woes and that all obstacles would vanish if only 'they' would be 'dealt with.' A great challenge for any person is to assume responsibility for one's own decisions/shortcomings/failures, and then take steps to rectify them. That applies equally to individuals or nations. But the allure of scapegoating continues, notwithstanding it proves ruinous to whoever employs it.

Being a psychic, I'm no stranger to prejudice, which may vary from 'good-natured' ribbing to outright threats. I've been accused of being a fraud, a swindler, a liar, in cahoots with Satan (never quite figured out that one), doomed to hell, or simply called 'insane.' These accusations aren't from clients, but rather from strangers compelled to deliver their condemnation of any professing psychic abilities. Once on a long plane trip, I'd chatted for several hours with a fellow passenger and we got on famously. But upon belatedly learning my profession, he literally turned his back on me the rest of the flight!

Fortunately, I found this amusing rather than insulting.

I saw an interesting story recently. 'Jake' had been a white supremacist all his life. Eventually, he was sent to prison, where his views only hardened. Upon release, he cemented his 'tough guy' image by getting a pit bull, knowing they were 'vicious and intimidating' dogs. The problem was...his pooch turned out to be a sweetheart; good tempered, loyal, and affectionate. The dog's unconditional love softened Jake's heart in an unexpected way...and he found himself defending 'Boomer' when others condemned him due to this breed's dark reputation. Unjustified accusations about his pal led Jake to realize he'd been doing the same towards minority groups. Upon reflection, his prejudice fell away and Jake

now views individuals as unique and worth getting to know.

The world stays the same and evolves at the same time. If Aliens from another galaxy came to earth, they would neither know or care about 'race' or 'religion' or 'nationality.' We would be simply Earthlings in their eyes (if they indeed had any). Someday, we may learn to view ourselves the same way, as part of a unique human family. And hopefully, it won't require an alien invasion to unite us.

Marjorie is available for readings at the Ballard Sunday Market, her Ballard home, or by phone. Email her at [myballardpsychic@gmail.com](mailto:myballardpsychic@gmail.com). See her fantasy/adventure series at [www.theboywithgoldeneyes.com](http://www.theboywithgoldeneyes.com). Follow her on Twitter: @psychicmargie.



## Police seeking help in stabbing death of a 15 year old in Westcrest Park; GoFundMe page set up to help victim's family

A young man, only 15 years old has died after being stabbed near the southern portion of Westcrest Park Tues., Sept. 5 according to Seattle Police. He has been identified as Derek Juarez-Lopez a sophomore at Chief Sealth International High School. The Seattle Times published a story detailing his family's grief and matters surrounding the crime on Wednesday.

In response to the crime a GoFundMe page has been set up to help his family pay for funeral and medical costs. It has already exceeded \$20,000.

The link is [www.gofundme.com/derekjuarezlopezfund](http://www.gofundme.com/derekjuarezlopezfund)

Detectives now believe that robbery was the motive behind this homicide. Homicide detectives are actively pursuing leads and encourage anyone with information on the Sept.



Derek Juarez-Lopez was stabbed and later died in what Seattle Police believe was a robbery and assault at Westcrest Park near White Center. Age, 15.

5 incident to contact investigators. This is still an active and on-going investigation.

Just before 9:15 a.m., the victim walked out of the woods and collapsed on a sidewalk near 6th Avenue S.W. and S.W. Cambridge Street.

The Seattle Police Blotter said that the victim said he'd been stabbed and passersby called 911.

Medics were called to the scene to treat the man and officers searched the area for a suspect, witnesses and other evidence.



# Oktoberfest

Join us for an afternoon filled with food, music & prizes. See our next generation of living options: including brand new Cottages, new Brownstone designs, available apartments & more. Plus, we'll unveil plans for our new Gardens building!

## Open House

Sunday, October 1  
1:30-4:00 p.m.

Win a trip to  
Leavenworth  
valued at \$500!

## RSVP today!

[wesleyhomes.org](http://wesleyhomes.org) or 206.824.5000

Wesley Homes  
DES MOINES



Wesley Homes Des Moines is a not-for-profit organization offering retirement communities and home health services for people who love life.™

816 South 216th Street  
Des Moines, WA 98198

localseattle.com

Now Serving Our  
New Fall  
Menu



Family Friendly



Beer/Food/Wine

7900 35th Ave. S.W.



# WSCALENDAR

Deadline for receiving Calendar items is Noon Wednesday for the following week's issue. Events are published based on timeliness and space available. Email submissions as soon as possible to: [calendar@robinsonnews.com](mailto:calendar@robinsonnews.com). Items can be accepted from nonprofit groups and government agencies only. Others may call 206.387.3873 for inclusion in our "Out & About" advertising column.

## WEST SEATTLE

### DISCOVERY SHOP

4535 California Ave. S.W.  
206.937.7169

Celebrate Autumn! Any one item of your choice is 40% off September 21 and any item with a pink tag is reduced 75% starting September 18. The all volunteer run, non-profit American Cancer Society shop is open every Sun. 11 a.m.-3 p.m. and all other days 10 a.m.-4:30 p.m. Follow our blog at [www.discoveryshopwestseattle.org](http://www.discoveryshopwestseattle.org).

### LIONS CLUB PANCAKE BREAKFAST

Senior Center of West Seattle  
4217 S.W. Oregon St.

**Sat., Sept. 16, 8-11 a.m.** Treat yourself to the best pancake breakfast in Seattle for over 85 years. Menu includes pancakes, sausage, eggs, coffee and orange juice—all for \$7—what a deal! Add to that, proceeds fund important programs at the Senior Center of West Seattle and Lions vision services in the West Seattle community.

### WEST SEATTLE TIMEBANK GATHERING

Senior Center of West Seattle  
4217 S.W. Oregon St.

**Thurs., Sept. 21, 6:30-8 p.m.** Come and learn about Timebanking. Bring an item you no longer need and exchange it for something you may need. It's a potluck so bring a dish if you'd like (not required). More info: [www.westseattletimebank.org](http://www.westseattletimebank.org).

### WEST SEATTLE BIG BAND DINNER & SWING DANCE

Senior Center of West Seattle  
4217 S.W. Oregon St.

**Fri., Sept. 22, 6 p.m.** Featuring the music of Frank Sinatra. No-host bar all evening. Dinner starts at 6:30 p.m. Dancing starts at 7 p.m. \$20 members, \$25 non-members. This fundraiser for the Senior Center of West Seattle will sell out fast so pre-register at [www.sc-ws.org](http://www.sc-ws.org) or call 206.932.4044 ext. 1.

### BINGO EVENING ON WAIKIKI

Fauntleroy Church Social Hall  
9140 California Ave. S.W.

**Sat., Sept. 23, 5:30 p.m.** Hawaiian themed

dinner 6 p.m. \$25 per person includes the first card for ten bingo games with themed baskets Bingo prizes. Raffle ticket \$5 with prizes of five-night stay on Kauai or a beautiful Hawaiian quilt. This is a family friendly event to benefit the Admiral Congregational Church programs. Wear your Hawaiian attire and join in the fun for all ages. Tickets available at the door or in advance at Admiral Church 4320 S.W. Hill St. 206.932.2928.

## HIGHLINE

### MY AGING PARENTS NEED HELP! WHAT DO I DO?

King County Library, Des Moines  
21620 11th Ave. S.

**Mon., Sept. 18, 6-7:30 p.m.** We are living longer and those 85 and older are the fastest growing segment of the population. As a result, adult children are finding themselves in the driver's seat, helping their parents navigate the twists and turns of aging, and determining the best choices from an abundance of options in support, care and housing. D'Anna Edison of Aging Wisdom will provide a broad overview about: signs your parents need help, practical tips on having a conversation with your parents, preparing for resistance to care and how to address it, next steps for planning the future and getting ahead of a crisis. For more info call 206.824.6066.

### WESTSIDE BABY'S 80'S CHIC COCKTAIL BENEFIT!

Metropolist  
2931 1st Ave. S.

**Fri., Sept. 22, 7:30-10:30 p.m.** Join us in your best acid wash and neon as we shake things up at our 1980's chic Cocktail Benefit. Buy tickets today in order to enjoy cool cocktails, bangin' bites and sweet jams in a chic retro environment to raise funds for babies and children in our community!

### ARTS GALA ON POVERTY BAY

Des Moines Beach Park Auditorium  
22030 Cliff Ave. S.

**Fri., Sept. 22, 5-9 p.m.** Support Des Moines Arts by attending the 3rd annual Arts Gala on Poverty Bay. Great art for sale along with an art auction. Enjoy appe-

tizers, talented local entertainment, and wine. Tickets are \$50 and are available at the Des Moines Field House, by calling 206.870.6527, at Salon Michelle, or at [brownpapertickets.com](http://brownpapertickets.com). Sponsorship opportunities also available. Funds raised at the gala will help support the 2018 Beach Park Summer Concerts Season and the 2018-2020 Art on Poverty Bay Outdoor Sculpture Gallery.

### 9TH ANNUAL BURIEN JAZZ WALK

Multiple venues

**Sat., Sept. 23, 3-11 p.m.** Burien Arts Association's Annual Burien Jazz Walk (formerly known as Highline Classic Jazz Festival) returns to venues along S.W. 152nd St. Five music stages, plus vintage jazz films at The Tin Theater, will present jazz from the early days of Dixieland to the Swing bands of the 1930's to the Cool sounds of the 1960's. Also included—Acoustic Blues, American Roots and World Jazz. Visit [www.burienjazz.com/](http://www.burienjazz.com/) for more info.

## BALLARD

### PUGET SOUND CRUISING CLUB PRESENTS: AUTHOR WENDY HINMAN

North Seattle College, Library Auditorium  
9600 College Way N.

**Sept 15, 7:30 p.m.** Local author Wendy Hinman, with Garth Wilcox, presents true life sailing adventures, riveting stories offering rich lessons for prospective voyagers and armchair sailors alike. Tightwads on the Loose details their 34,000-mile, seven-year Pacific voyage together aboard a 31-foot boat. Sea Trials: Around the World with Duct Tape and Bailing Wire recounts teenaged Garth's tale of shipwreck, wild weather, pirates, gun boats, mines and thieves, dengue fever, scurvy, and more in a sailing trial that tested his family's limits. Come hear snippets from these amazing adventures from the people who lived them. Donation: \$5 (for auditorium rental).

### SUSTAINABLE BALLARD KNITTERS FOR THE HOMELESS

On the Park, 2233 N.W. 58th St.

(contact Jody for entrance directions)

**Tues., Sept. 19, 7-9 p.m.** (monthly on third

Tues.) Knitting instruction and yarn provided. Donated yarn welcome. Info: Jody at 206.718.1529 or [jodytgrage@gmail.com](mailto:jodytgrage@gmail.com).

### FISHERMEN'S FALL FESTIVAL

Fishermen's Terminal  
1900 W. Nickerson St.

**Sat., Sept. 23, 11 a.m.-6 p.m.** The 29th annual Fishermen's Fall Festival is a FREE event celebrating the return of the North Pacific fishing fleet to the terminal. The Festival increases the public's knowledge of the importance of the fishing industry as well as Fishermen's Terminal to Seattle while raising money for the Seattle Fishermen's Memorial Foundation. This is an all-volunteer event that depends on over 200 volunteers for its success. The Festival provides families with a fun and educational outing on the waterfront as well as an opportunity to learn more about seafood. Hands-on art projects with fishing themes, including the popular wooden boat building and trout pond, are complimentary for all children and admission to the festival is free. Proceeds from the activities within the Festival are donated to the Seattle Fishermen's Memorial to assist families of fishers lost at sea. The Fishermen's Fall Festival is a truly unique Seattle event! For more information, [www.fishermensfallfestival.org](http://www.fishermensfallfestival.org).

### FUNDRAISING DINNER, SILENT AUCTION, AND DANCE FOR LEIF ERIKSON HALL

Leif Erikson Hall  
2245 N.W. 57th St.

**Sat., Sept. 23 6 p.m.** Puget Sound Ski for Light is sponsoring the fundraising dinner, silent auction, and dance for Leif Erikson Hall. Serving open-fire grilled salmon and cod with music by Nordic Reflections. Tickets/reservations by calling 206.783.1274 or Brown Paper Tickets [www.brownpapertickets.com/event/3061461](http://www.brownpapertickets.com/event/3061461). Tickets \$25. All proceeds go to the repair and upgrade of the Hall. Watch our home being built at: [www.youtube.com/watch?v=hXMmadk-wYms&t=99s](http://www.youtube.com/watch?v=hXMmadk-wYms&t=99s). Additional donations may be made at: [www.gofundme.com/leiferikson](http://www.gofundme.com/leiferikson) lodge.

## The Hi-Liners Musical Theatre Presents



Disney THE LITTLE MERMAID

Highline Performing Arts Center

401 S. 152nd St. Burien

September 9th, 16th and 23rd 7:30 p.m.

September 10th, 17th and 24th 1:30 p.m.

Join us under the sea!

Tickets: [www.hi-liners.org](http://www.hi-liners.org)  
206-617-2152

## LINN, SCHISEL & DEMARCO, PS



Frank DeMarco



Julie Schisel

Family Law • Adoptions • Business • Wills • Estate Planning  
Probate • Elder Law • Guardianship • Bankruptcy



860 S.W. 143rd St. • Burien  
206-242-9876 • [www.Lsand.com](http://www.Lsand.com)





**To Place Your  
Legal Notice in  
Westside  
Seattle**

Please call  
206.376.5952  
or email [legals@robinsonnews.com](mailto:legals@robinsonnews.com)



legals@robinsonnews.com				PUBLICNOTICES				Legal/Public Notices must be received no later than 12 noon on Friday			
<b>IN THE SUPERIOR COURT OF THE STATE OF WASHINGTON IN AND FOR THE COUNTY OF KING NO. 17-2-19647-9KNT</b>		tentative of this estate. Any person having a claim against the decedent must, before the time the claim would be barred by any otherwise applicable statute of limitations, present the claim in the manner as provided in RCW 11.40.070 by serving on or mailing to the personal representative or the personal representative's attorney at the address stated below a copy of the claim and filing the original of the claim with the court in which the probate proceedings were commenced. The claim must be presented within the later of: (1) Thirty days after the personal representative served or mailed the notice to the creditor as provided under RCW 11.40.020 (1)(c); or (2) four months after the date of first publication of the notice. If the claim is not presented within this time frame, the claim is forever barred, except as otherwise provided in RCW 11.40.051 and RCW 11.40.060. This bar is effective as to claims against both the decedent's probate and non-probate assets.		Personal Representative: Marilyn L. Kelly		<b>IN THE SUPERIOR COURT OF THE STATE OF WASHINGTON IN AND FOR THE COUNTY OF KING NO: 17-4-05211-3SEA PROBATE NOTICE TO CREDITORS RCW 11.40.030</b>		served or mailed the notice to the creditor as provided under RCW 11.40.020 (1)(c); or (2) four months after the date of first publication of the notice. If the claim is not presented within this time frame, the claim is forever barred, except as otherwise provided in RCW 11.40.051 and RCW 11.40.060. This bar is effective as to claims against both the decedent's probate and non-probate assets.		<b>IN THE SUPERIOR COURT OF THE STATE OF WASHINGTON IN AND FOR THE COUNTY OF KING NO: 17-4-04920-1SEA PROBATE NOTICE TO CREDITORS RCW 11.40.030</b>	
<b>SUMMONS BY PUBLICATION</b>		Address for Mailing or Services: 2401 NW 65th Street Seattle, WA 98117		In the matter of the estate of: <b>CRAIG LEONARD KOCH (AKA COACH),</b> Deceased.		<b>IN THE SUPERIOR COURT OF THE STATE OF WASHINGTON IN AND FOR THE COUNTY OF KING NO: 17-4-05237-7SEA PROBATE NOTICE TO CREDITORS RCW 11.40.030</b>		In the matter of the estate of: <b>RITA D. WINTERS,</b> Deceased.		In the matter of the estate of: <b>ROBERT DOUGLAS SEABORN, JR.,</b> Deceased.	
<b>COREY WILKINS, Plaintiff,</b>		Court of probate proceedings and Cause Number: King County Superior Court 17-4-05245-8SEA		THE PERSONAL REPRESENTATIVE NAMED BELOW has been appointed as personal representative of this estate. Any person having a claim against the decedent must, before the time the claim would be barred by any otherwise applicable statute of limitations, present the claim in the manner as provided in RCW 11.40.070 by serving on or mailing to the personal representative or the personal representative's attorney at the address stated below a copy of the claim and filing the original of the claim with the court in which the probate proceedings were commenced. The claim must be presented within the later of: (1) Thirty days after the personal representative served or mailed the notice to the creditor as provided under RCW 11.40.020 (3); or (2) four months after the date of first publication of the notice. If the claim is not presented within this time frame, the claim is forever barred, except as otherwise provided in RCW 11.40.051 and RCW 11.40.060. This bar is effective as to claims against both the decedent's probate and non-probate assets.		Date of first publication: September 1, 2017		Date of first publication: September 15, 2017		THE PERSONAL REPRESENTATIVE NAMED BELOW has been appointed as personal representative of this estate. Any person having a claim against the decedent must, before the time the claim would be barred by any otherwise applicable statute of limitations, present the claim in the manner as provided in RCW 11.40.070 by serving on or mailing to the personal representative or the personal representative's attorney at the address stated below a copy of the claim and filing the original of the claim with the court in which the probate proceedings were commenced. The claim must be presented within the later of: (1) Thirty days after the personal representative served or mailed the notice to the creditor as provided under RCW 11.40.020 (1)(c); or (2) four months after the date of first publication of the notice. If the claim is not presented within this time frame, the claim is forever barred, except as otherwise provided in RCW 11.40.051 and RCW 11.40.060. This bar is effective as to claims against both the decedent's probate and non-probate assets.	
<b>vs.</b>		Published in the Westside Seattle on September 1, 8, 15, 2017 # 0010		Date of first publication: September 1, 2017		Personal Representative: Debra E. Blaurock		Personal Representative: Charles C. Caldart		Date of first publication: September 15, 2017	
<b>CHARLES BURTON;</b> any unknown heirs at Law of the estate of <b>CHARLES B. WARFIELD;</b> any unknown heirs at law of The Estate of ALVESTER WARFIELD; any unknown heirs at law of the Estate of MAUDIE WARFIELD; and all other persons claiming any right, title, estate, lien, or Interest in the real estate described in the Complaint herein,		<b>IN THE SUPERIOR COURT OF THE STATE OF WASHINGTON IN AND FOR THE COUNTY OF KING NO: 17-4-05246-6SEA PROBATE NOTICE TO CREDITORS RCW 11.40.030</b>		In the matter of the estate of: <b>JACK W. EISEMAN,</b> Deceased.		Address for Mailing or Services: 4826 California Avenue SW Seattle, WA 98116		Attorney for the Personal Representative: HEATHER S. DE VRIEZE WSBA # 28553		Attorney for the Personal Representative: HEATHER S. DE VRIEZE WSBA # 28553	
Defendants.		Date of first publication: September 1, 2017		THE PERSONAL REPRESENTATIVE NAMED BELOW has been appointed as personal representative of this estate. Any person having a claim against the decedent must, before the time the claim would be barred by any otherwise applicable statute of limitations, present the claim in the manner as provided in RCW 11.40.070 by serving on or mailing to the personal representative or the personal representative's attorney at the address stated below a copy of the claim and filing the original of the claim with the court in which the probate proceedings were commenced. The claim must be presented within the later of: (1) Thirty days after the personal representative served or mailed the notice to the creditor as provided under RCW 11.40.020 (1)(c); or (2) four months after the date of first publication of the notice. If the claim is not presented within this time frame, the claim is forever barred, except as otherwise provided in RCW 11.40.051 and RCW 11.40.060. This bar is effective as to claims against both the decedent's probate and non-probate assets.		Court of probate proceedings and Cause Number: King County Superior Court 17-4-05214-8SEA		Address for Mailing or Services: 3909 California Ave. SW #101 Seattle, WA 98116-3705		Court of probate proceedings and Cause Number: King County Superior Court 17-4-05386-1SEA	
The State of Washington to the said any unknown heirs at Law of the Estate of CHARLES B. WARFIELD; an unknown heirs at law of The Estate of ALVESTER WARFIELD; any unknown heirs at the law of the Estate of MAUDIE WARFIELD; and all other persons claiming any right, title, estate, lien, or interest in the real estate described in the complaint herein, Defendants:		Personal Representative: Karleen Keiko Wesley		Date of first publication: September 1, 2017		Published in the Westside Seattle on September 1, 8, 15, 2017 #0013		Published in the Westside Seattle on September 15, 22, 29, 2017 #0017		<b>IN THE SUPERIOR COURT OF THE STATE OF WASHINGTON IN AND FOR THE COUNTY OF KING NO: 17-4-04892-2KNT PROBATE NOTICE TO CREDITORS RCW 11.40.030</b>	
You are hereby summoned to appear within sixty (60) days after the date of the first publication of this summons, to wit, within sixty (60) days after the 18th day of August, 2017, and defend the above entitled action in the above entitled court, and answer the complaint of the Plaintiff and serve a copy of your answer upon the undersigned attorney for the Plaintiff at their office below stated; and in case of your failure to do so, judgment will be rendered against you according to the demand of the complaint, which has been filed with the clerk of said court.		Attorney for the Personal Representative: HEATHER S. DE VRIEZE WSBA # 28553		<b>IN THE SUPERIOR COURT OF THE STATE OF WASHINGTON IN AND FOR THE COUNTY OF KING NO: 17-4-05247-4SEA PROBATE NOTICE TO CREDITORS RCW 11.40.030</b>		In the matter of the estate of: <b>BERNICE A. MATHIASEN ,</b> Deceased.		Date of first publication: September 8, 2017		In the matter of the estate of: <b>GARY BLAINE KING,</b> Deceased.	
The object of this action is to quiet title in Plaintiff to real estate located in King County, Washington, legally described as:		Address for Mailing or Services: 3909 California Ave SW #101 Seattle, WA 98116-3705		THE PERSONAL REPRESENTATIVE NAMED BELOW has been appointed as personal representative of this estate. Any person having a claim against the decedent must, before the time the claim would be barred by any otherwise applicable statute of limitations, present the claim in the manner as provided in RCW 11.40.070 by serving on or mailing to the personal representative or the personal representative's attorney at the address stated below a copy of the claim and filing the original of the claim with the court in which the probate proceedings were commenced. The claim must be presented within the later of: (1) Thirty days after the personal representative served or mailed the notice to the creditor as provided under RCW 11.40.020 (1)(c); or (2) four months after the date of first publication of the notice. If the claim is not presented within this time frame, the claim is forever barred, except as otherwise provided in RCW 11.40.051 and RCW 11.40.060. This bar is effective as to claims against both the decedent's probate and non-probate assets.		Personal Representative: Mary Kathleen Evetts Koch		Personal Representative: Patricia A. Santulli		THE ADMINISTRATOR NAMED BELOW has been appointed as Administrator of this estate. Any person having a claim against the decedent must, before the time the claim would be barred by any otherwise applicable statute of limitations, present the claim in the manner as provided in RCW 11.40.070 by serving on or mailing to the Administrator or the Administrator's attorney at the address stated below a copy of the claim and filing the original of the claim with the court in which the probate proceedings were commenced. The claim must be presented within the later of: (1) Thirty days after the Administrator served or mailed the notice to the creditor as provided under RCW 11.40.020 (1)(c); or (2) four months after the date of first publication of the notice. If the claim is not presented within this time frame, the claim is forever barred, except as otherwise provided in RCW 11.40.051 and RCW 11.40.060. This bar is effective as to claims against both the decedent's probate and non-probate assets.	
LOTS 10, 11, 12 AND 13, BLOCK 4, POTTERY WORKS ADDITION TO THE CITY OF SEATTLE, ACCORDING TO THE PLAT THERE-OF RECORDED IN VOLUME 5, PAGE 86, RECORDS OF KING COUNTY, WASHINGTON;		Published in the Westside Seattle on September 1, 8, 15, 2017 #0009		Date of first publication: September 1, 2017		Attorney for the Personal Representative: JAMES G. BARNECUT WSBA # 7571		Attorney for the Personal Representative: TIMOTHY A. LAW WSBA # 7374		Attorney for the Personal Representative: DAVID PETTEYS WSBA # 33157	
SITUATE IN THE COUNTY OF KING, STATE OF WASHINGTON. DATED this 9th day of August, 2017		<b>IN THE SUPERIOR COURT OF THE STATE OF WASHINGTON IN AND FOR THE COUNTY OF KING NO: 17-4-05245-8SEA PROBATE NOTICE TO CREDITORS RCW 11.40.030</b>		THE PERSONAL REPRESENTATIVE NAMED BELOW has been appointed as personal representative of this estate. Any person having a claim against the decedent must, before the time the claim would be barred by any otherwise applicable statute of limitations, present the claim in the manner as provided in RCW 11.40.070 by serving on or mailing to the personal representative or the personal representative's attorney at the address stated below a copy of the claim and filing the original of the claim with the court in which the probate proceedings were commenced. The claim must be presented within the later of: (1) Thirty days after the personal representative served or mailed the notice to the creditor as provided under RCW 11.40.020 (1)(c); or (2) four months after the date of first publication of the notice. If the claim is not presented within this time frame, the claim is forever barred, except as otherwise provided in RCW 11.40.051 and RCW 11.40.060. This bar is effective as to claims against both the decedent's probate and non-probate assets.		Address for Mailing or Services: 4826 California Avenue SW Seattle, WA 98116		Address for Mailing or Services: 5017 37th Avenue SW Seattle, WA 98126		Address for Mailing or Services: 1455 NW Leary way #400 Seattle, WA 98107	
Attorney for plaintiff: DARCEL LOBO WSBA #41682		In the matter of the estate of: <b>MARGARET R. JACOBS,</b> Deceased.		Court of probate proceedings and Cause Number: King County Superior Court 17-4-05211-3SEA		Published in the Westside Seattle on September 1, 8, 15, 2017 #0012		Court of probate proceedings and Cause Number: King County Superior Court 17-4-05237-7SEA		Published in the Westside Seattle on September 15, 22, 29, 2017 #0019	
Address for Mailing or Services: 19803 1st Avenue South #200 Normandy Park, WA 98148		THE PERSONAL REPRESENTATIVE NAMED BELOW has been appointed as personal representative of this estate. Any person having a claim against the decedent must, before the time the claim would be barred by any otherwise applicable statute of limitations, present the claim in the manner as provided in RCW 11.40.070 by serving on or mailing to the personal representative or the personal representative's attorney at the address stated below a copy of the claim and filing the original of the claim with the court in which the probate proceedings were commenced. The claim must be presented within the later of: (1) Thirty days after the personal representative served or mailed the notice to the creditor as provided under RCW 11.40.020 (1)(c); or (2) four months after the date of first publication of the notice. If the claim is not presented within this time frame, the claim is forever barred, except as otherwise provided in RCW 11.40.051 and RCW 11.40.060. This bar is effective as to claims against both the decedent's probate and non-probate assets.		Date of first publication: September 1, 2017		Published in the Westside Seattle on September 1, 8, 15, 2017 #0011		Published in the Westside Seattle on September 8, 15, 22, 2017 # 0016		<b>IN THE SUPERIOR COURT OF THE STATE OF WASHINGTON IN AND FOR THE COUNTY OF KING NO: 17-4-05386-1SEA PROBATE NOTICE TO CREDITORS RCW 11.40.030</b>	
Published in the Westside Seattle on August 18, 25, September 1, 8, 15, 22, 2017 #0002		Personal Representative: Diane P. Baselice		<b>IN THE SUPERIOR COURT OF THE STATE OF WASHINGTON IN AND FOR THE COUNTY OF KING NO: 17-4-05214-8SEA PROBATE NOTICE TO CREDITORS RCW 11.40.030</b>		In the matter of the estate of: <b>ELEANOR YANTIS,</b> Deceased.		In the matter of the estate of: <b>CORA ELIZABETH CALDART,</b> Deceased.		Date of first publication: September 15, 2017	
<b>IN THE SUPERIOR COURT OF THE STATE OF WASHINGTON IN AND FOR THE COUNTY OF KING NO: 17-4-05249-1SEA PROBATE NOTICE TO CREDITORS RCW 11.40.030</b>		Attorney for the Personal Representative: HENRY W. GRENLEY WSBA # 1321		THE PERSONAL REPRESENTATIVE NAMED BELOW has been appointed as personal representative of this estate. Any person having a claim against the decedent must, before the time the claim would be barred by any otherwise applicable statute of limitations, present the claim in the manner as provided in RCW 11.40.070 by serving on or mailing to the personal representative or the personal representative's attorney at the address stated below a copy of the claim and filing the original of the claim with the court in which the probate proceedings were commenced. The claim must be presented within the later of: (1) Thirty days after the personal representative served or mailed the notice to the creditor as provided under RCW 11.40.020(3);		Date of first publication: September 1, 2017		Date of first publication: September 1, 2017		Administrator: Linda Kay King	
In the matter of the estate of: <b>BEVERLY REIKO GOTO,</b> Deceased.		Address for Mailing or Services: 2401 NW 65th Street Seattle, WA 98117		Published in the Westside Seattle on September 1, 8, 15, 2017 #0015		Personal Representative: Victoria a. Clausen-den Tex		Attorney for the Administrator: W. TRACY CODD WSBA # 16745		Address for Mailing or Services: P.O. BOX 1238 Seahurst, WA 98062-1238	
THE PERSONAL REPRESENTATIVE NAMED BELOW has been appointed as personal repre-		Court of probate proceedings and Cause Number: King County Superior Court 17-4-05246-6SEA		THE PERSONAL REPRESENTATIVE NAMED BELOW has been appointed as personal representative of this estate. Any person having a claim against the decedent must, before the time the claim would be barred by any otherwise applicable statute of limitations, present the claim in the manner as provided in RCW 11.40.070 by serving on or mailing to the personal representative or the personal representative's attorney at the address stated below a copy of the claim and filing the original of the claim with the court in which the probate proceedings were commenced. The claim must be presented within the later of: (1) Thirty days after the personal representative served or mailed the notice to the creditor as provided under RCW 11.40.020(3);		Attorney for the Personal Representative: HENRY W. GRENLEY WSBA # 1321		Address for Mailing or Services: 2401 NW 65th Street Seattle, WA 98117		Court of probate proceedings and Cause Number: King County Superior Court 17-4-04892-2KNT	
		Published in the Westside Seattle on September 1, 8, 15, 2017 #0011		THE PERSONAL REPRESENTATIVE NAMED BELOW has been appointed as personal representative of this estate. Any person having a claim against the decedent must, before the time the claim would be barred by any otherwise applicable statute of limitations, present the claim in the manner as provided in RCW 11.40.070 by serving on or mailing to the personal representative or the personal representative's attorney at the address stated below a copy of the claim and filing the original of the claim with the court in which the probate proceedings were commenced. The claim must be presented within the later of: (1) Thirty days after the personal representative served or mailed the notice to the creditor as provided under RCW 11.40.020(3);		Address for Mailing or Services: 2401 NW 65th Street Seattle, WA 98117		Court of probate proceedings and Cause Number: King County Superior Court 17-4-05247-4SEA		Published in the Westside Seattle on September 15, 22, 29, 2017 #0018	

To Place Your  
Legal Notice in  
Westside  
Seattle

Please call  
206.376.5952  
or email  
legals@  
robinsonnews.com





# COMMUNITYCLASSIFIEDS

TO PLACE YOUR AD • Call: 206.718.9016 • Email: classifieds@robinsonnews.com • Mastercard, Amex and VISA accepted

## Appliance Service

402

APPLIANCE REPAIR  
All brands, 23 Years Exp.  
Call Apex Appliance Service  
206-782-4740

## Construction

421

PUGET SOUND CONSTRUCTION  
Int/Ext Painting; Build wood  
fences, decks, patio covers;  
drywall repairs  
LIC#PUGETSC038KA  
253-350-3231

## Cleaning / Janitorial Services

422

Customized Cleaning LLC  
Customize your cleaning needs,  
lic'd, insured & bonded.  
206-550-4672.



## Concrete

423

DAVID MAGINNIS  
CONSTRUCTION CO.  
Patios, Driveways, Sidewalks,  
Exposed Aggregate, Walls,  
Excavating. # DA-VI-DMC285QN  
206-938-0553.

## HEGGE CEMENT

- Patios
- Drives
- Walks
- Repairs
- Loader Work
- Licensed

Free Estimates  
**206-783-4211**  
HEGGECE223DH

## Electrical

428

**KEMLY ELECTRIC**  
Residential • Commercial  
Home Rewiring Specialist  
Panel Upgrades  
Service Calls Welcome  
Call Brian for Estimate  
**206-782-1670**  
SENIOR DISCOUNTS  
Lic# KEMLYEI038DR

## Gutters

438

David's Roof Cleaning  
Professional Roof & Gutter  
Cleaning, roof treatment. Prompt  
courteous service. Free  
estimates 206-229-4411 or  
253-565-1088. DAVIDRC997Q7

## Handy Person

440

**Northwest Pride Handyman Services**  
**SENIOR DISCOUNT 15% OFF**  
Specializing in  
**Bathroom Remodeling**  
and all types of home repair.  
37 yrs exp. FREE Estimates.  
**Call Don 206-914-3838**  
NWPrideHandyman.com  
  
Lic#NORTHHPK899DU, Bond., Ins.

## Hauling & Towing

442

**Happy Hauler**  
Attics • Basements  
Garages  
Estate Clear Outs  
—Senior Discounts—  
(206) 784-0313

## Lawn, Garden, Landscaping

448

**Any Type of Yard Work**  
Landscaping, weed, trim,  
prune, patios, new sod,  
rockery, hauling, clean-up.  
Call Mike 206-242-4378  
**Beauty Garden Service**  
Lic#GS957PK

**Steve's Gardening**  
bark • weed • trim • prune  
new sod • pavers  
general cleanup  
rockery • retaining walls  
**206-244-6043**  
#stevegl953kz

**HAULING**  
**\$75-\$150**  
Most Loads  
Lawn Care/Hauling & Clean Ups  
**TINY MOWERS**  
**206.618.9222**

## Painting

456

## Gary D. Torgerson Co.

*Building Restoration Specialists*

## Expert Residential Painting and Carpentry

Comprehensive professional services  
essential to long term home preservation  
and renovation.

Visit our website for extensive displays of  
our services and expertise, including  
correction of peeling & blistering problems.

www.TorgersonCompany.com  
GARYDT134CJ Phone: 206-781-0999

## Plumbing

460

**FOX PLUMBING & HEATING**  
**One Call Does It All**  
Plumbing Repairs  
Heating and Cooling Service  
Sewer Repair  
Tankless Water Heaters  
Trenchless Water Line Repair  
**GPS DISPATCHED**  
Think Out of the Box... Talk to Fox  
Keep Small Problems From Becoming Big One's  
**206 787-3311**  
www.foxph.com  
FOXPLH\*163LO

**THE PLUMBER**  
35 Years Residential  
Experience  
**206-949-4363**  
GENEJP114B8



## Tree Service

474



**Ballard Tree Service, Inc.**  
*A community-service company donating to the community  
if you need help, let us know.*  
— Owner, Greg Allen, retired Seattle firefighter  
**206-782-4847**  
Licensed, Bonded & Insured • 24 Hour Emergency Service  
**Tree Pruning/Removal • Stump Grinding • Backhoe  
Excavating • Chipping, Hauling and Crane Service  
Topsoil and Gravel Delivery  
Free Wood & Free Wood Chips**

## Painting

456

## Roofing

464

**SENIOR CITIZENS ROOFING DISCOUNTS**  
**AMERICAN GENERAL CONTRACTORS, INC.**  
*Licensed, Bonded and Insured*  
AMERIGC923B8  
**Roofing • Gutters Remodeling**  
 **Roof Completed BEFORE You Pay!**  
**206-625-9900**

**ROOFING SPECIALISTS**  
• All Types of Roofing  
• Aluminum Gutters  
• Home Repairs  
• Leaks Repaired  
• Moss - Clean & Treat  
• Free Estimates  
**BEST WAY Construction Co.**  
**783-3639**  
www.bestway-construction.com  
BESTWCC137CR

## Help Wanted A-Z

550

**Senior Center of West Seattle**  
Rewarding volunteer  
opportunities available.  
Send email to  
sarah@soundgenerations.org  
for details.

**Volunteer with Food Lifeline**  
Help end hunger by  
volunteering in our  
warehouse!  
Visit [foodlifeline.org/](http://foodlifeline.org/)  
volunteer to learn more

**Volunteer in the West Seattle Junction**  
Join the growing number  
of volunteers who are  
doing good in the Junction  
neighborhood.  
Visit [wsjunction.org/](http://wsjunction.org/)  
volunteer

## Tree Service

474

**FREE Estimate**  
Call 206-782-4847  
For Your Appointment  
Never Expires  
**\$25 or 10% OFF**  
\$25 Off Any Stump Grinding  
of \$200 or more  
Or 10% OFF Any Tree Service  
(up to \$300 value)  
With coupon only. Not valid with any other offer.  
Never Expires

## Window Installation

482

## Window Installation

482

**White Center Glass & Upholstery**  
**NEED ASSISTANCE?**  
Glass • Windows • Screens • Shower Doors  
Mirrors • Tabletops • Shelving  
Full line upholstery • Auto • Home • Marine  
9443 Delridge Way S.W.  
Seattle WA 98106  
**206-762-8088**  
BONDED & INSURED  
www.whitecenterglass.com  
Since 1962  
Located in the Delridge Triangle

Want to add  
**YOUR**  
business  
to the  
Westside  
Seattle  
distribution  
list?

Call Dave at  
**206.370.1475**



## Get your copy of WestsideSeattle

Your neighborhood weekly serving Ballard, Burien/Highline, SeaTac, Des Moines, West Seattle and White Center

## Available at these locations:

### BALLARD

MARKET ST DELI  
BALLARD MARKET  
IMAN'S DELI MARKET  
KEN'S GROCERY  
SALEH'S DELI  
JAVA BEAN  
FIREHOUSE COFFEE  
BOY'S & GIRL'S CLUB  
ELK'S CLUB  
LOYAL HEIGHTS COMM CENTER  
AUTO LICENSE NW MARKET ST  
BALLARD CHAMBER OF COMMERCE  
NEIGHBORHOOD SERVICE CENTER  
BALLARD COMMUNITY CENTER  
GREENWOOD SENIOR CENTER  
PHINNEY NEIGHBORHOOD CENTER  
BALLARD SENIOR CENTER  
SWEDISH HOSPITAL  
GREENWOOD LIBRARY  
BALLARD LIBRARY  
FRED MEYER—NW 45TH ST  
WALGREENS—15TH AVE NW  
SELECT QFC STORES  
SAFEWAY—CROWNHILL

### HIGHLINE

AM PM AMBAUM BLVD SW  
WAYNE'S SERVICE CENTER  
TOMS GROCERY  
757 MINI-MART  
BURIEN UNION 76  
NORMANDY PARK SHELL  
SEAHURST HANDY MART  
THRIFTWAY—DES MOINES MEM WY S  
E-Z MART  
BURIEN FOODS  
ANDY'S HANDY MART  
NORMANDY PARK MARKET  
RONIES MARKET  
DES MOINES DRUG  
THE POINT  
DUANE'S GARDEN PATCH  
DISCOVER BURIEN ORG  
CEDARBROOK LODGE  
HIGHLINE ATHLETIC CLUB

TUKWILA RECREATION CENTER  
BURIEN LIBRARY  
BOULEVARD PARK LIBRARY  
DES MOINES SENIOR CENTER  
FOSTER LIBRARY  
BURIEN COMMUNITY CENTER  
NORTH SEATAC PARK COMMUNITY  
VALLEY VIEW LIBRARY  
DES MOINES LIBRARY  
SELECT SAFEWAY STORES  
SELECT 7-11 STORES  
WALGREENS—AMBAUM BLVD SW  
QFC—1ST AVE S  
FRED MEYER—1ST AVE S

### WEST SEATTLE

ALKI MAIL AND DISPATCH  
SELECT BARTELL DRUGS STORES  
SELECT CHEVRON STATIONS  
METROPOLITAN MARKET  
WEST SEATTLE FOOD MART  
SAAR'S MARKET PLACE  
SHOREWOOD GROCERY  
MORNING STAR  
SHELL STAR MART  
C & F FOODS  
THRIFTWAY  
JOHN'S DELI  
GASCO CORNER  
LINCOLN PARK MINI MART  
WEST SEATTLE LIBRARY  
WEST SEATTLE HEALTH CLUB  
WHITE CENTER LIBRARY  
GREENBRIDGE LIBRARY  
WEST SEATTLE SENIOR CENTER  
SALVATION ARMY/SENIOR CENTER  
DELRIDGE NEIGHBORHOOD CENTER  
DELRIDGE LIBRARY  
DELRIDGE COMMUNITY CENTER  
HIGH POINT LIBRARY  
SOUTHWEST LIBRARY  
SELECT SAFEWAY STORES  
SELECT 7-11 STORES  
SELECT QFC STORES  
WALGREENS— 35TH SW

## WestsideSeattle

Do you get it? Call 206.370.1475 to Subscribe.

FROM  
BURIEN TO  
BALLARD



THEY'RE  
READING!

PLACE YOUR AD TODAY  
206.718.9016





**BERKSHIRE  
HATHAWAY**  
HomeServices

**Northwest  
Real Estate**



**Mike Gain**  
CEO



**Sonya Wind**  
206-399-8466



**Roy Willanger**  
206-933-0300



**Carle Trotter**  
206-250-6825



**Sean Stolte**  
206-854-7006



**Sally Hardwick**  
206-938-6848



**Jennifer Ruemping**  
206-923-6932



**Craig Roberts**  
206-938-6829



**Kathy Forester**  
206-930-7681



**Paul Poirier**  
206-915-6881



**Jacob Menashe**  
206-938-6864



**Chariti McIndoe**  
206-679-9226



**Michael Mallagh**  
206-501-5600



**Don Bereiter**  
Branch Manager



**Alicia Ames**  
206-549-3770



**Jeff Ames**  
206-938-6423



**Ken Arkills**  
206-310-3670



**Brian Bailey**  
206-619-6693



**Jennifer Whip**  
206-854-2666



**Patricia Blaustein**  
206-938-6812



**Bruce Butterfield**  
206-932-2400



**George Butterfield**  
206-938-1280



**Jill Campbell**  
206-714-7067



**Mark Denniston**  
NW Mortgage Alliance  
206-932-1500



**Justin O'Dell**  
425-830-5634



**Jonathan French**  
206-938-4855



**Karen Grace**  
206-718-8484



**Ashley Dolan**  
206-953-9063

## *Congratulations to our Top Ten Producers in August*



**Paul Poirier**



**Jonathan French**



**Michael Mallagh**



**Ken Knoke**



**David Katt**



**Kathy Sheldon**



**Randy Fillingim**



**Karen Grace**



**Ashley Dolan**



**Amy Onutz**



**Scott Lansing**  
206-498-6824



**Shari Kruse**  
206-650-0871



**Ken Knoke**  
206-295-2808



**Jeralee Knittel**  
206-713-0788



**Debbie Kerns**  
206-300-7904



**David Katt**  
206-650-0863



**Barb Joseph**  
206-972-8702



**Steven Henke**  
206-947-4701



**Tracy Harris**  
206-650-0695



**Gay Harper**  
206-992-8225



**Sean Jolly**  
206-938-6656

### **JUST LISTED GATEWOOD FIXER \$350,000**

Two bedroom, one bath home, perfect for investor or sweat equity project! Basement with ample ceiling height. Attached garage, large lot with alley access. Minutes away from Westwood Village, Morgan and Alaska Junctions. #201188873

### **JUST LISTED MID-CENTURY \$485,000**

Solid, one owner Highland Park home with sweeping city views from large picture windows. Original oak hardwood floors. Oversized rec room, spacious 2-car garage with shop and storage area. Huge deck overlooking private fully fenced grounds. #201187086

### **NORTH SHOREWOOD CHARM \$514,000**

Charm and character abound in this freshly updated bungalow with quick access to Burien and West Seattle. Versatile spaces, separate entrance for MIL or guest quarters. Large deck with sunset views, fenced backyard with patio, hot tub and greenhouse! #201176208

### **SPARKLING HOME IN HIGH POINT \$520,000**

Free standing 2 bedroom, 2.5 bath home with hardwoods on main level. Double sided gas fireplace between living and dining spaces. Beautiful kitchen with granite counters, island, stainless appliances. Upper level master suite. New paint, new carpet. One-car garage. #201187074

### **JUST LISTED NEAR MORGAN JUNCTION \$539,000**

Three bedroom two bath home features a spacious new kitchen with counter bar and stainless appliances. Gorgeous new tiled baths, exterior and interior paint and newer windows. Sparkling hardwoods, new carpet. #201175722

### **GRAND CRAFTSMAN \$598,000**

Truly special 4 bedroom home in Shorewood, with many updates and 2nd second story addition in 2001. Covered front porch, master bedroom with view lanai. Newly installed hardwoods in living and dining rooms. Lovely landscaping, large fully fenced yard in back with patio, garden space and shed. #201190083

### **SOUTH LAKE UNION CONDO \$599,000**

Beautifully maintained 2 bedroom, 2 bath unit with amazing views of the lake and downtown from rooftop deck. Spacious master bedroom with lots of closet space. Light and bright living room with gas fireplace. Secure parking with 2 spaces. #201170935

### **UPDATED BELVIDERE TUDOR \$924,999**

Beautifully maintained and updated 1927 home with 5 large bedrooms, 2.5 baths. Formal dining room with French doors to deck, huge updated chef's kitchen with gas Dacor range. Wine cellar and rec room in basement. Walk to restaurants, shops, parks, and grocery stores! #201177976

### **PRIVATE MODERN FARMHOUSE \$1,295,000**

Spectacular home with expansive Elliot Bay and mountain views from multiple decks. Two Master Suites with tile and marble bathrooms, soaking tub and custom closets. Open living areas with chef's kitchen with slate and butcher block. Stunning. #201138374

### **MARINE VIEW DRIVE SWEEPING VIEWS! \$1,195,000**

Gorgeous Puget Sound and Olympic mountain views from this 4 bedroom home with 60 feet of secluded pristine waterfront. Private with fenced trail to bulkhead, with patio on the water and kayak storage! Large master bedroom, dining and living rooms. #201184552

**4700 42nd SW Suite 600 • 206-932-4500 • BHHSNWRealEstate.com**

© 2017 BHH Affiliates LLC. An independently operated subsidiary of HomeServices of America, Inc., A Berkshire Hathaway affiliate, and a franchisee of BHH Affiliates, LLC. Berkshire Hathaway HomeServices and the Berkshire Hathaway HomeServices Symbol are registered service marks of HomeServices of America, Inc®. Equal Housing Opportunity





# REAL ESTATE GUIDE & PUZZLES

**WHAT IS YOUR HOME WORTH?**

**FREE MARKET ANALYSIS**  
I can get your home sold!  
Give me a call today at  
206-409-4220

**STUART STEADMAN**  
www.stuartsteadman.com  
#1 Branch Realtor

**BERKSHIRE HATHAWAY**  
Home Services  
Northwest Real Estate

78851

**West Seattle Apts** 245

**ALKI PROPERTY MGMT, LLC**

**Apartment Rentals**  
(206) 932-3000  
1BD \$1475 – \$1540  
Call for more info.  
alkiapartmentrentals.com

**BOULEVARD PARK PLACE**  
ACTIVE RETIREMENT LIVING

**An Active Independent Retirement Community**

**Call to schedule a tour**  
206-243-0300 • BoulevardParkPlace.com

74198

**SUBSCRIBE TODAY!**

FRIDAY, JUNE 23, 2017 | Vol. 99, No. 25

**WestsideSeattle**  
Your neighborhood weekly serving Ballard, Burien/Highline, SeaTac, Des Moines, West Seattle and White Center

**IVAR'S NOT KEEPING CLAM OVER SEA-TAC RESTAURANT ROW**  
SEE » P. 8

**Get your copy of Westside Seattle delivered right to your mailbox.**  
52 issues for only \$56/year, \$38/year for seniors.  
Out of area subscriptions \$75 annually.

**Call Dave Kellogg at 206.370.1475 to subscribe.**  
Your local newspaper for more than **120 years!**

**SUDOKU**  
By Myles Mellor and Susan Flanagan

Eash Sudoku puzzle consists of a 9x9 grid that has been subdivided into nine smaller grids of 3x3 squares. To solve the puzzle each row, column and box must contain each of the numbers 1 to 9. Puzzles come in three grades: easy, medium and difficult. **Level: Medium**

6	9	8	4	3	7	5	2	1
7	1	2	6	8	5	9	3	4
4	5	3	9	1	2	8	7	6
2	7	9	8	4	6	3	1	5
5	3	6	7	9	1	4	8	2
1	8	4	5	2	3	7	6	9
8	6	2	3	9	9	1	7	3
9	2	1	3	7	4	6	9	8
3	4	5	1	6	8	2	9	7

			8					
	5			7			2	6
	4		6	5	2		9	8
		7				4	8	
2	8						3	5
	1	3				6		
9	7		2	1	6		5	
4	3			8			1	
					4			

PUZ 244

**Across**

- Drop
- Previously
- Visited
- French way
- Black color
- C.E.O.'s degree
- Dependence
- Musician's asset
- 1973 Supreme Court decision name
- Matinee hero
- Home \_\_\_\_\_
- Nonstick pan
- Farm team
- Greenery
- "Yes, \_\_\_\_!"
- Bake eggs
- Tear
- One who leaves prison without permission
- Sparkling wine
- Daze
- Monopoly purchase
- Formal accessory
- Hilo garland
- "O.K."
- In between liquid and solid
- "\_\_\_\_ Maria"
- Decree
- Protein source
- Fuse
- ESPN sportscaster
- Compass direction

**Down**

- Great time
- Larry \_\_\_\_ Melman
- Growing area
- Necktie
- Entry point
- Kimono sash
- Be suspicious (3 words)
- Lawyer's org. for short
- Combat
- Stand about idly
- Make lovable
- Clothes presser
- Not edible any more
- Medical quantities
- Subsist
- Tapped firmly
- Pointed arch
- Kathmandu's land
- Story
- Partner
- Crowded
- Likely
- Spring
- Trash bag, brand name
- Human parasites
- Pilot's problem
- Apple picker
- "Thanks a \_\_\_\_!"
- Bring to bear
- Kind of chamber
- Salon job

**Answers to September 8 Crossword**

1	A	2	D	3	S	4	H	5	A	6	S	7	W	8	A	9	R
10	T	O	E			11	A	E	G	I	S		13	A	L	I	
14	O	D	E			15	I	R	A	T	E		16	I	T	S	
17	P	O	M			18	P	O	M			19	E	N	B	L	O
						21	A	L	A			22	D	N	A		
23	T	E	N	P	I	N		25	S			27	A	R	R	O	W
31	O	R	E	O			32	N	I	B			34	N	I	P	A
35	N	A	B	O	B		36	B			37	R	E	B	O	O	T
						39	S	A	C			41	S	A	W		
42	T	H	R	E	S	H		45	I	L	L		46	U	S		
49	H	A	H				50	S	A		51	L	E	S		52	N
53	I	R	E				54	O	M	E	G	A			55	I	M
56	S	K	A				57	P	I	E					58	T	O

PUZ 61



# Give Dick's credit



## JEAN GODDEN

On the first Sunday in September, I drove into the Lake City Dick's Drive-In for my favorite comfort food (a Dick's Deluxe Burger, an order of fries and a chocolate shake). As I paid for my order with the usual handful of scrounged bills, quarters and the change located in the bottom of my purse, I blinked, wiped my eyes in disbelief and stared at something new and unexpected.

Positioned on the counter, opposite the cash register, was a credit-card machine. Unimaginable. After 62 years, Dick's has gone plastic.

I somehow missed the July announcement that Dick's, well known for its cash-only policy, was preparing to accept credit and debit cards as well as Apple Pay. All six Dick's locations began accepting plastic on September 1.

According to Jim Spady, Dick's president, allowing credit sales was one of the last de-

cisions made by his dad, Dick Spady, the chain's founder and namesake who passed away in January. Jim Spady says the reason the changeover took time was the need to update cash systems and to figure out how to "round up for charity." Dick's traditionally has collected spare cash, donations for such local charities as Mary's Place, Fare-Start and Operation Nightwatch. The new credit system has been tweaked to allow for those "round-up" charity donations.

What makes the switch to plastic newsworthy is that Dick's is more than just your typical, no great shakes (oh yeah?) burger outlet. Dick's is a Seattle institution with an outsized national reputation. In 2012, Dick's bested such heavyweight hamburger chains as Five Guys and In-N-Out in an Esquire.com survey as "the most life-changing burger joint."

Dick's acquired national status partly thanks to exposure by music headliners such as Sir-Mix-a-Lot, Macklemore, Blue Scholars and the Presidents of the United States. Dick's iconic burger bag even starred in a movie, "Love Happens," along with Jennifer Aniston.

National notoriety aside, the chain has earned a reputation as one of Seattle's most progressive enterprises. Dick's paid employees above minimum wage before that was a rallying cry. The chain offers employees 100 percent medical coverage, 401K matches and \$22,000 college tuition scholarships after six-months' work.

The nation's "most life-changing burger joint" succeeded despite its limited menu. All that was ever offered were four styles of burgers, one size of hand-cut fries, three classic

shakes, root beer floats, soda and ice cream.

The chain was founded in 1954 by Dick Spady, a former U. S. Navy food service officer, and his two partners, H. Warren Ghormley and Dr. B.O.A. Thomas, a pediatrician. The decision to call the first drive-in "Dick's" was a brilliant public relations coup, a common touch.

What else was brilliant has seldom been reported—excuse me for a small measure of reflected glory. But here it is: Dick's corporate logo was devised by my late husband, commercial artist Bob Godden. Bob drew the "Dick's" sign with a star dotting the "i" and the trademarked picture on Dick's burger bags. The drawing shows a drive-in with a 50s style roof and three cars parked out front. The one in the middle is our old Chevy—the one whose bumpers I kept denting. Inside the car you can see

a couple kissing. I like to think it's Bob and me, but it could be any affectionate duo.

Just file this information under "little known facts" about Dick's, along with the fact that the drive-in is the go-to burger joint for Microsoft's Bill Gates. When you can have any dish you want, isn't it great that the wealthiest man in the world patronizes Seattle's "life-changing" burger hangout? And now, if Bill wants to, he can use plastic.

Jim Spady is famous for once having said that "The only reason people still carry cash in Seattle is to eat at Dick's Drive-in." That's no longer true and, in a way, it's a pity.

Jean Godden is a veteran Seattle PI and Seattle Times newspaperwoman and city councilwoman. Her column will give us an insider's view of city politics. You can email Jean at [jgodden@blarg.net](mailto:jgodden@blarg.net).



## A COMMUNITY WELLNESS FAIR!

Learn how to improve you and your family's health and wellness

### Flu Shots & Giveaways

Free Screenings for: Blood Pressure, Hearing, Sight, Diabetes and Glaucoma

SATURDAY, SEPTEMBER 16TH 2017 10AM TO 3PM

MERRILL GARDENS BANQUET ROOM • 15020 5TH AVE. S.W.

For more information visit [www.DicsoverBurien.org](http://www.DicsoverBurien.org)

SPONSORED BY:

